



CITY MANAGER'S REPORT

AUGUST 4, 2020

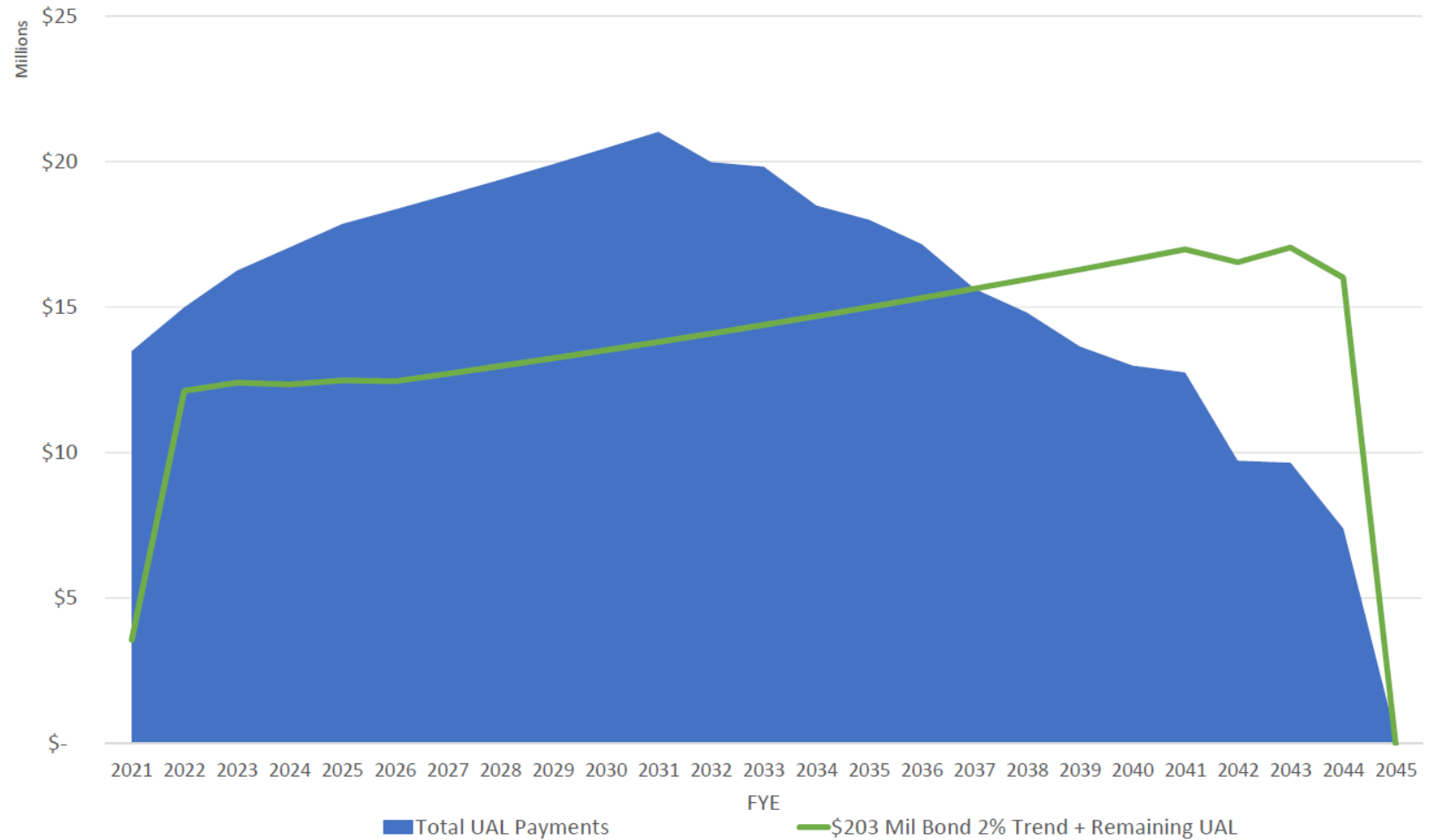


LEASE REVENUE BONDS - CLOSED

FYE	Total UAL to CalPERS (if NO Bonds)	Debt Service on Lease Revenue Bonds	Savings
2021	\$13,478,878	\$3,560,534	\$10,927,344
2022	\$14,984,757	\$10,694,885	\$2,860,265
2023	\$16,253,477	\$10,906,799	\$3,849,047
2024	\$17,051,545	\$11,114,083	\$4,711,747
2025	\$17,862,822	\$11,388,563	\$5,378,353
2026	\$18,354,051	\$11,271,662	\$5,902,712
2045	\$241,398	\$16,418,403	\$323,490
TOTAL	\$387,886,474	\$321,437,341	\$52,775,577

LEASE REVENUE BONDS

- Chart of CalPERS UAL Payments vs Lease Revenue Bonds over 24-year term



COVID-19 – YOUTH SPORTS

- LA County Department of Public Health Order does **NOT ALLOW** youth leagues
- City is doing its best to address complaints
- City appreciates all the youth leagues that are adhering to the Health Order

Novel Coronavirus (COVID-19)

Health Officer Order's Impact on Daily Life FAQs

unless they're eating, drinking or swimming). Playgrounds, splashpads, aquatic facilities, and concession stands remain closed. Basketball courts, volleyball courts, baseball and soccer fields at public sites are also closed at this time. However, streets or other areas can be temporarily closed to car traffic for recreation such as walking or riding bikes, although no events or gatherings can be held on closed streets.

See the [Reopening Protocol](#) for the site you'd like to visit for additional information on activities that are allowed and those that are not permitted.

- **Can you rent or check-out outdoor equipment?**

Outdoor equipment, such as kayaks, surf or paddle boards, canoes, bikes, fishing gear, and helmets may be available for rental/check-out, if operators can follow instructions for cleaning. However, whenever possible, you should bring your own equipment, since sharing equipment can increase the risk for spread of COVID-19.

- **What kinds of sports can you or your children play?**

You can do outdoor recreational activities or sports, such as walking, hiking, bicycling, running, or horseback riding, as long as you follow social (physical) distancing and the appropriate County [Reopening Protocol](#). You can also play some non-contact sports, such as golf, tennis, or pickleball. You can't play sports that involve shared equipment or physical contact such as soccer, basketball, football, volleyball, baseball, paintball, or miniature golf with anyone outside of your own household. **At this time, youth sports leagues can't operate, and no team practices, scrimmages, or games are allowed.**

COVID-19 – CITY HALL CLOSURE UPDATE

Due to outbreak
with COVID-19 City
Hall Closed to the
Public on July 20,
2020

City Hall curbed
outbreak & should be
cleared this week

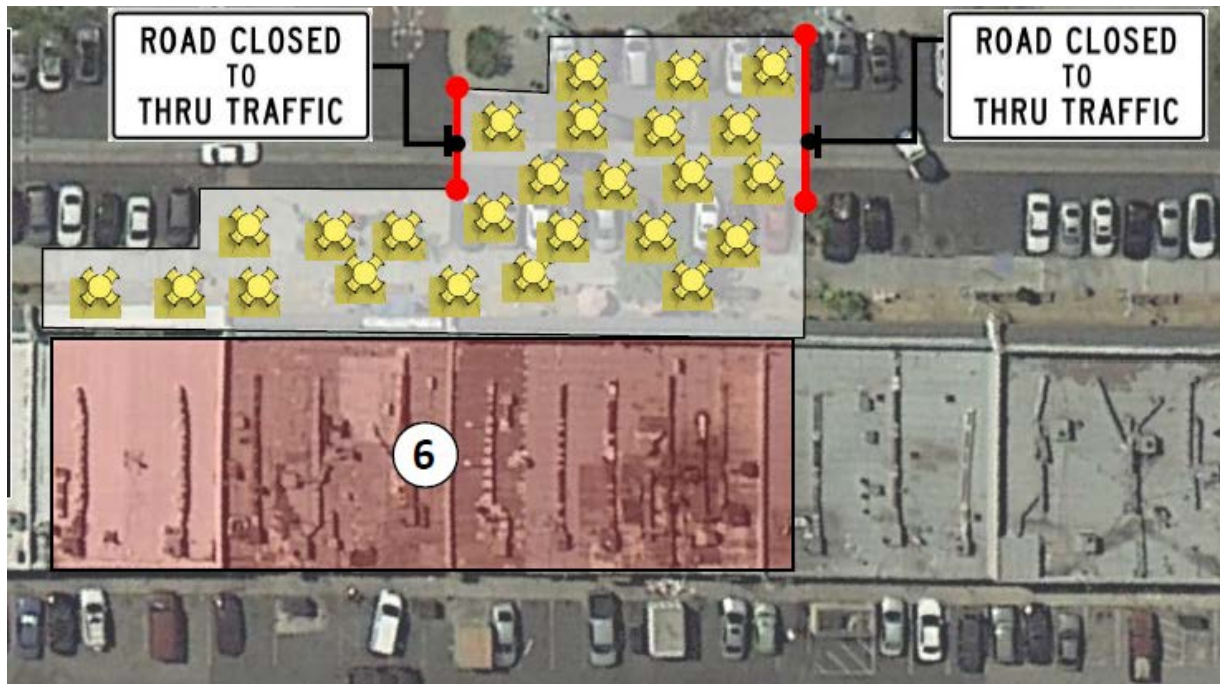
Will reopen City Hall
to public following
clearance from LA
County Health
Department



FY 20-21 BUDGET

CURTAILED PARKS AGREEMENT – IMPACTING TRASH PICKUP AT PARKS

GLENDORA AVENUE – OUTDOOR DINING



COVID-19 – RECOGNIZING LOCAL BUSINESS



CORONAVIRUS OUTBREAK

MAKING THE MOST OF OPENING DAY

SYMPTOMS INCLUDE: FEVER, COUGH, SHORTNESS OF BREATH, CHILLS, SHAKING, HEADACHE, MUSCLE PAIN

6:06

75°

ANAHEIM
NOW





CORONAVIRUS OUTBREAK

MAKING THE MOST OF OPENING DAY

PORTNESS OF BREATH, CHILLS, SHAKING, HEADACHE, MUSCLE PAIN, SORE THROAT AND A S

6:06 75°
ANHEIM
DODGERS ARE BACK!
4 