

MAP OF PROPOSED BOUNDARIES OF CITY OF WEST COVINA COMMUNITY FACILITIES DISTRICT NO. 2009-1

MAR 16 2009

CITY OF WEST COVINA
COUNTY OF LOS ANGELES
STATE OF CALIFORNIA



COPY of Document Recorded
This has not been compared with original.
Original will be returned when
processing has been completed.
LOS ANGELES COUNTY REGISTERED - RECORDERS

FILED IN THE OFFICE OF THE CITY CLERK OF THE CITY OF WEST COVINA, THIS 3rd DAY OF March, 2009.

I HEREBY CERTIFY THAT THE WITHIN MAP SHOWING PROPOSED BOUNDARIES OF THE CITY OF WEST COVINA COMMUNITY FACILITIES DISTRICT NO. 2009-1, CITY OF WEST COVINA, COUNTY OF LOS ANGELES, STATE OF CALIFORNIA, WAS APPROVED BY THE CITY COUNCIL OF WEST COVINA AT A REGULAR MEETING THEREOF, HELD ON THE 3rd DAY OF March, 2009, BY ITS RESOLUTION NO. 2009-11

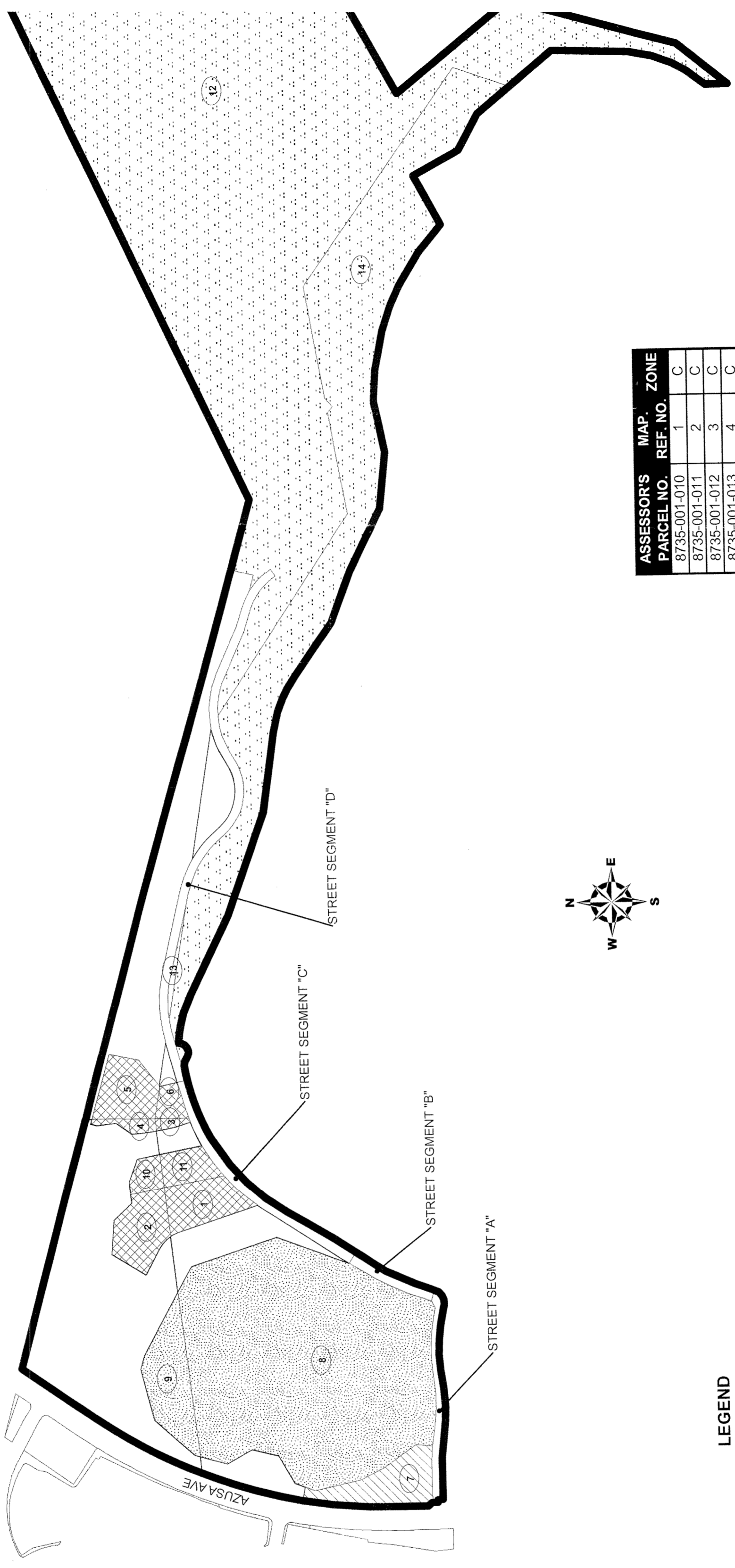
Swain Smith, President
CITY CLERK
CITY OF WEST COVINA

FILED THIS 16 DAY OF March, 2009, AT THE HOUR OF 10 O'CLOCK AM, IN BOOK 193, PAGE 19 OF MAPS OF ASSESSMENT AND COMMUNITY FACILITIES DISTRICTS AND AS INSTRUMENT NO. _____ AT THE REQUEST OF THE CITY OF WEST COVINA IN THE OFFICE OF THE COUNTY RECORDER OF THE COUNTY OF LOS ANGELES, STATE OF CALIFORNIA.

[Signature]
BY DEPUTY COUNTY RECORDER/CLERK COUNTY OF LOS ANGELES

THE LINES AND DIMENSIONS OF EACH LOT OR PARCEL SHOWN ON THIS MAP SHALL BE THOSE LINES AND DIMENSIONS AS SHOWN ON THE LOS ANGELES COUNTY ASSESSOR'S MAPS FOR THOSE PARCELS LISTED.

THE LOS ANGELES COUNTY ASSESSOR'S MAPS SHALL GOVERN FOR ALL DETAILS CONCERNING THE LINES AND DIMENSIONS OF SUCH LOTS OR PARCELS.



LEGEND
CFD 2009-1 BOUNDARY
MAP REF NO.
ZONE A
ZONE B
ZONE C
ZONE D

ASSESSOR'S PARCEL NO.	MAP REF. NO.	ZONE
8735-001-010	1	C
8735-001-011	2	C
8735-001-012	3	C
8735-001-013	4	C
8735-001-014	5	C
8735-001-015	6	C
8735-001-912	7	A
8735-001-913	8	B
8735-001-914	9	B
8735-001-933	10	C
8735-001-934	11	C
8735-002-906	12	D
8735-002-907	13	D
8735-002-908	14	D

