

October 19, 2020

Tony Blakely
Corporate Director of Planning, Design, and Construction
Emanate Health
140 West College Street
Covina, California 91722

VIA EMAIL
tblakely@emanatehealth.org

Subject: Tree Inventory Report for the Queen of the Valley Hospital Medical Office Building; Parking Structure; and Emergency Department/Intensive Care Unit Project (Precise Plan No. 20-04), West Covina, California

Dear Mr. Blakely:

Psomas is pleased to provide this tree inventory report for the Queen of Valley Hospital Project site located at 1115 South Sunset Avenue in West Covina, California (Exhibit 1). The purpose of the tree inventory is to document all trees on the Project site and specifically identify all trees that are subject to regulation by the City of West Covina (City) to support the environmental assessment of the proposed Project.

PROJECT DESCRIPTION

The proposed Project involves the construction of a two-story medical office building (MOB) adjacent to the existing Queen of the Valley Hospital. The new medical office building would be to the northeast of the existing main building and surrounded by landscaping. The new four-level parking structure will contain 398 parking spaces and would be constructed northwest of the existing main building, adjacent to the new MOB and separated by a landscaped area. Surface parking spaces are also provided outside the structure adjacent to the entrance and along the north and west elevations. Landscaping and a walkway separate the parking structure from the medical office building.

Additionally, a new two-story emergency department and intensive care unit (ED/ICU) would be constructed to the southwest of the existing Education Annex and to the west of the main hospital building. A total of 235 on-site parking spaces would be associated with these buildings. Adjacent to the MOB entry/exit would be a patient drop-off area and eight ambulance parking spaces. There would be landscaping along the entrance and patient drop-off area and within the surface parking lot.

REGULATORY AUTHORITY

The tree inventory summarized herein documents trees that are defined as “significant trees” or “heritage trees” in Division 9 of the City’s Municipal Code. These trees cannot be removed without first acquiring a tree permit from the City.

Significant trees are defined as any tree in the front yard of a parcel (or street-side yard of a corner lot) with a trunk diameter measuring at least 12 inches or trees located anywhere on a lot whose trunk measures at least 6 inches for the following species: any oak tree species

5 Hutton Centre Drive
Suite 300
Santa Ana, CA 92707

Tel 714.751.7373
Fax 714.545.8883
www.Psomas.com

Mr. Tony Blakely
 October 19, 2020
 Page 2

(*Quercus* spp.) that is native to California, California sycamore (*Platanus racemosa*), or American sycamore (*Platanus occidentalis*). The trees listed in this report are those that meet the size and/or species requirements to be considered as significant trees though the City's Municipal Code does not specify if the definition of significant trees applies to commercial properties. The significant tree definition does not indicate how to calculate the trunk diameter of multi-trunk trees. Therefore, trees that have a cumulative trunk diameter of 12 inches are included in this inventory.

Heritage trees are any individual tree or group of trees that have been identified by resolution of the Planning Commission based on: (1) association with a historic place, building, natural feature, or event; (2) identification on any historic or cultural resources survey as a significant feature of a landmark, historic site, or historic district; (3) its value as being representative of a significant period of the City's development; or (4) designation for protection or conservation in a specific plan, conditional use permit, precise plan of design, tract or parcel map, or similar development approval.

All street trees adjacent to the Project site were also evaluated and are included in this inventory report.

METHODS

Psomas Certified Arborist Trevor Bristle (International Society of Arboriculture Certificate No. WE-10233A) visited the Project site on August 24 and 31, 2020 to document the type, quantity, and condition of trees on the Project site. Each tree was individually numbered, and the trunk, branches, and foliage were carefully examined. During the site visit, the following data were recorded: tree species, trunk diameter at breast height (dbh), and canopy diameter. The health and aesthetic quality of each tree was assessed on a scale of 1 (very poor) to 5 (excellent).

The health evaluation generally considered visual evidence of vigor, such as the amount of foliage; leaf color and size; presence of branch or twig dieback; severity of insect infestation; the presence of disease; heart rot; fire damage; mechanical damage; amount of new growth; appearance of bark; and rate of callous development over wounds. Structural integrity was also evaluated with respect to branch attachment, branch placement, root health, and stability. Tree aesthetics were evaluated with respect to overall form and symmetry, crown balance, branching pattern, and broken branches.

EXISTING CONDITIONS

The survey area for this report consists of landscaped areas associated with the various buildings on the property and adjacent surface parking lots. Many of the trees in the survey area are planted amidst the parking lots and line the outer boundary of the property. As stated above, this tree inventory identifies all trees that meet the definition of "significant trees", though the City's Municipal Code does not state if this definition also applies to commercial properties. In all, the site inventory identified 272 trees in the survey area consisting of: 1 African fern pine (*Afrocarpus falcatus*), 1 crimson bottlebrush (*Callistemon citrinus*), 1 Deodar cedar (*Cedrus deodara*), 2 silk floss trees (*Chorisia speciosa*), 17 camphor trees (*Cinnamomum camphora*), 16 carrotwoods (*Cupaniopsis anacardioides*), 6 South African coral trees (*Erythrina caffra*), 2 Nichol's willowleafed peppermint (*Eucalyptus nicholii*), 1 common fig (*Ficus carica*), 1 rubber tree (*Ficus elastica*), 1 Indian laurel fig (*Ficus microcarpa*), 2 rusty-leaf figs (*Ficus rubiginosa*), 67 Shamel ash trees (*Fraxinus uhdei*), 1 maidenhair tree (*Ginkgo biloba*), 2 Arizona cypress (*Hesperocyparis arizonica*), 15 jacarandas (*Jacaranda mimosifolia*), 1 goldenrain tree (*Koelreuteria paniculata*), 18 crape myrtles (*Lagerstroemia indica*), 4 glossy privets (*Ligustrum lucidum*), 35 sweetgums (*Liquidambar styraciflua*), 1 tulip tree (*Liriodendron tulipifera*), 12 southern magnolias (*Magnolia grandiflora*), 1 saucer magnolia (*Magnolia x soulangeana*), 10 mulberry trees (*Morus alba*), 1 olive (*Olea europaea*), 1 Canary Island date palm (*Phoenix canariensis*), 4 Canary Island pines (*Pinus canariensis*), 1 Chinese pistache (*Pistacia chinensis*), 1 Catalina cherry (*Prunus ilicifolia* ssp. *Lyonii*), 17

Mr. Tony Blakely
 October 19, 2020
 Page 3

evergreen pears (*Pyrus kawakamii*), 4 holly oak (*Quercus ilex*), 1 black locust (*Robinia pseudoacacia*), 6 Brazilian pepper trees (*Schinus terebinthifolius*), 11 coast redwoods (*Sequoia sempervirens*), 1 California fan palm (*Washingtonia filifera*), and 6 Mexican fan palms (*Washingtonia robusta*).

Trees in the survey area are generally well maintained and in good health without significant health problems. A significant exception is tree number 38; this American sweetgum is dead and should be removed as soon as possible because its location next to a bus stop makes this tree a hazard.

The locations of the trees described above are provided on Exhibit 2. A complete summary of the collected tree data during the field evaluation is provided in Attachment A.

EXPECTED TREE IMPACTS

The three Project construction components are indicated on Exhibit 2 and include: the MOB, the new Parking Structure, and the ED/ICU. Expected tree impacts that would result from Project implementation are summarized in Table 1 and are categorized by the Project components. All trees listed in Table 1 meet the definition of significant trees, assuming the definition applies to both residential and commercial property. In all, a total of 70 significant trees are expected to be removed for Project construction, consisting of 23 tree removals for the MOB, 29 removals for the new Parking Structure, and 18 removals for the ED/ICU. None of the trees on the Project site are considered heritage trees.

**TABLE 1
 SUMMARY OF PROPOSED TREE REMOVALS**

Tree Species		Quantity to be Removed	Range of Trunk DBH (inches)*
Scientific Name	Common Name		
Medical Office Building Area			
<i>Cupaniopsis anacardioides</i>	carrotwood	4	13.6 – 15.4
<i>Ficus elastica</i>	rubber tree	1	31.7
<i>Fraxinus uhdei</i>	Shamel ash	2	29.0 – 40.4
<i>Liquidambar styraciflua</i>	sweetgum	6	12.0 – 31.9
<i>Liriodendron tulipifera</i>	tulip tree	1	18.1
<i>Magnolia grandiflora</i>	southern magnolia	7	13.0 – 32.1
<i>Pyrus kawakamii</i>	evergreen pear	2	18.8 – 26.4
	Subtotal	23	
Parking Structure Area			
<i>Cinnamomum camphora</i>	camphor	6	12.5 – 21.2
<i>Erythrina caffra</i>	South African coral tree	4	23.0 – 41.4
<i>Fraxinus uhdei</i>	Shamel ash	15	12.1 – 19.5
<i>Sequoia sempervirens</i>	coast redwood	4	15.8 – 21.0
	Subtotal	29	
Emergency Department/Intensive Care Unit			
<i>Afrocarpus falcatus</i>	African fern pine	1	14.3
<i>Cinnamomum camphora</i>	camphor	2	15.5 – 19.2
<i>Erythrina caffra</i>	South African coral tree	1	31.9
<i>Lagerstroemia indica</i>	crape myrtle	5	8.7 – 12.6
<i>Liquidambar styraciflua</i>	sweetgum	6	12.0 – 18.6
<i>Magnolia grandiflora</i>	southern magnolia	2	12.0 – 15.5

**TABLE 1
 SUMMARY OF PROPOSED TREE REMOVALS**

Tree Species		Quantity to be Removed	Range of Trunk DBH (inches)*
Scientific Name	Common Name		
<i>Sequoia sempervirens</i>	coast redwood	1	26.6
	Subtotal	18	
Outside Project Areas/No Impact			
<i>Callistemon citrinus</i>	crimson bottlebrush	1	12.4
<i>Cedrus deodara</i>	Deodar cedar	1	32.9
<i>Chorisia speciosa</i>	silk floss tree	2	17.9 – 27.0
<i>Cinnamomum camphora</i>	camphor	9	12.2 – 26.5
<i>Cupaniopsis anacardioides</i>	carrotwood	12	12.0 – 17.9
<i>Erythrina caffra</i>	South African coral tree	1	23.4
<i>Eucalyptus nicholii</i>	Nichol's willowleafed peppermint	2	22.3 – 24.6
<i>Ficus carica</i>	common fig	1	17.8
<i>Ficus microcarpa</i>	Indian laurel fig	1	21.5
<i>Ficus rubiginosa</i>	rusty-leaf fig	2	13.0 – 22.5
<i>Fraxinus uhdei</i>	Shamel ash	50	10.4 – 38.5
<i>Ginkgo biloba</i>	maidenhair tree	1	23.7
<i>Hesperocyparis arizonica</i>	Arizona cypress	2	14.0 – 15.6
<i>Jacaranda mimosifolia</i>	jacaranda	15	14.4 – 21.6
<i>Koelreuteria paniculata</i>	goldenrain tree	1	12.7
<i>Lagerstroemia indica</i>	crape myrtle	13	12.4 – 19.1
<i>Ligustrum lucidum</i>	glossy privet	4	14.4 – 32.1
<i>Liquidambar styraciflua</i>	sweetgum	23	12.0 – 26.3
<i>Magnolia grandiflora</i>	southern magnolia	3	12.3 – 18.1
<i>Magnolia x soulangeana</i>	saucer magnolia	1	14.8
<i>Morus alba</i>	mulberry	10	16.5 – 21.0
<i>Olea europaea</i>	olive	1	52.0
<i>Phoenix canariensis</i>	Canary Island date palm	1	47.0
<i>Pinus canariensis</i>	Canary Island pine	4	17.2 – 24.1
<i>Pistacia chinensis</i>	Chinese pistache	1	13.9
<i>Prunus ilicifolia</i> ssp. <i>Lyonii</i>	Catalina cherry	1	13.3
<i>Pyrus kawakamii</i>	evergreen pear	15	12.1 – 18.1
<i>Quercus ilex</i>	holly oak	4	12.8 – 18.0
<i>Robinia pseudoacacia</i>	black locust	1	21.9
<i>Schinus terebinthifolius</i>	Brazilian pepper	6	10.0 – 25.6
<i>Sequoia sempervirens</i>	coast redwood	6	12.8 – 24.1
<i>Washingtonia filifera</i>	California fan palm	1	14.5
<i>Washingtonia robusta</i>	Mexican fan palm	6	10.0 – 14.5
	Subtotal	202	
	Total	272	
DBH: diameter at breast height			
*The DBH for trees that are multi-trunk trees are represented as the sum of the largest two trunks.			

Mr. Tony Blakely
October 19, 2020
Page 5

Please call David Hughes at (626) 351-2000 with any questions related to this report.

Sincerely,

P S O M A S

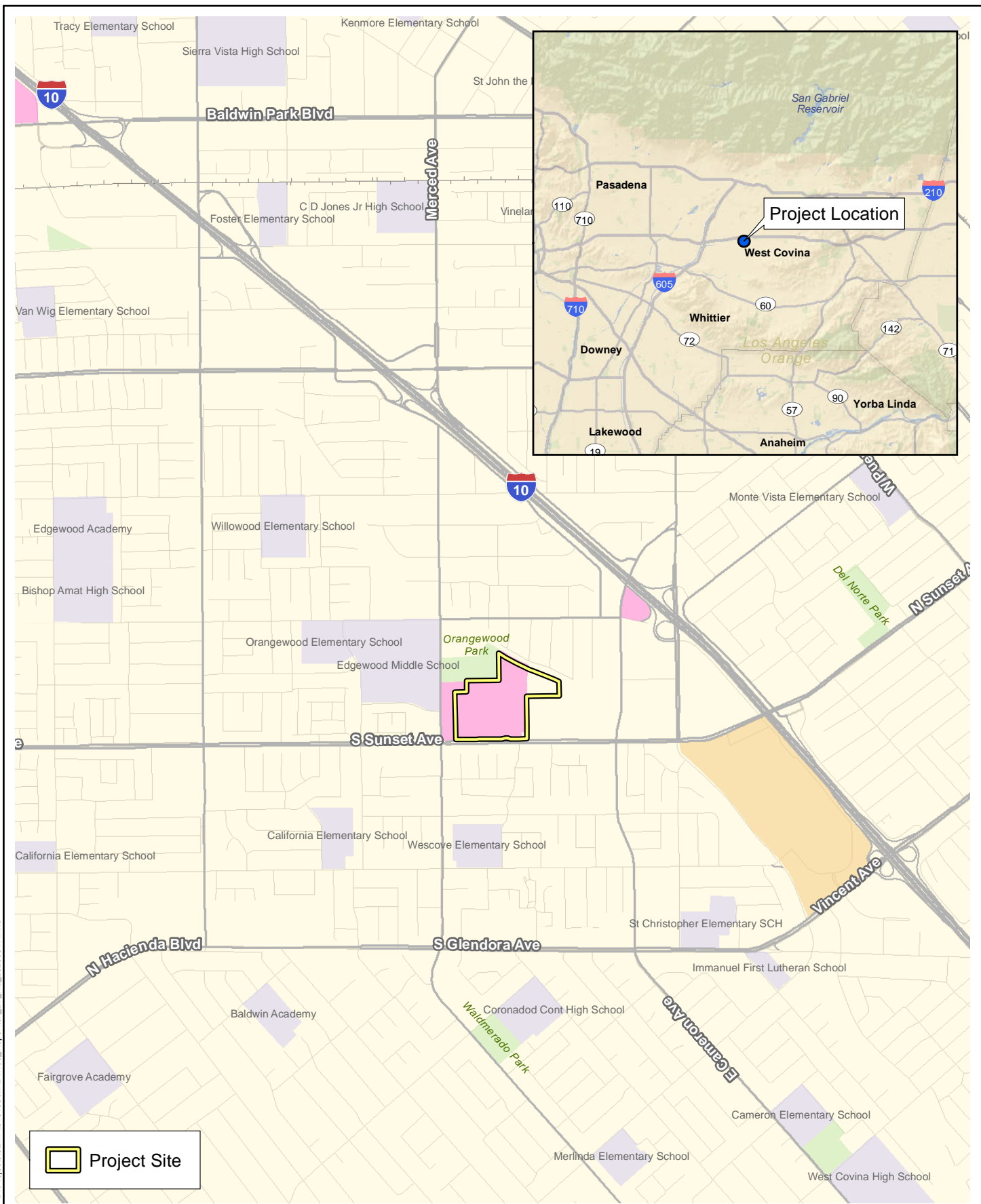



David T. Hughes
Senior Project Manager



Trevor Bristle
Certified Arborist
International Society of Arboriculture
Certificate No. WE-10233A

Attachments: Exhibits 1 and 2
A – Tree Data Summary

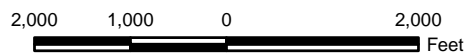


 Project Site

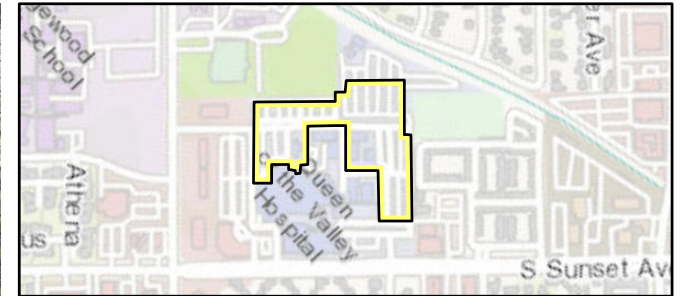
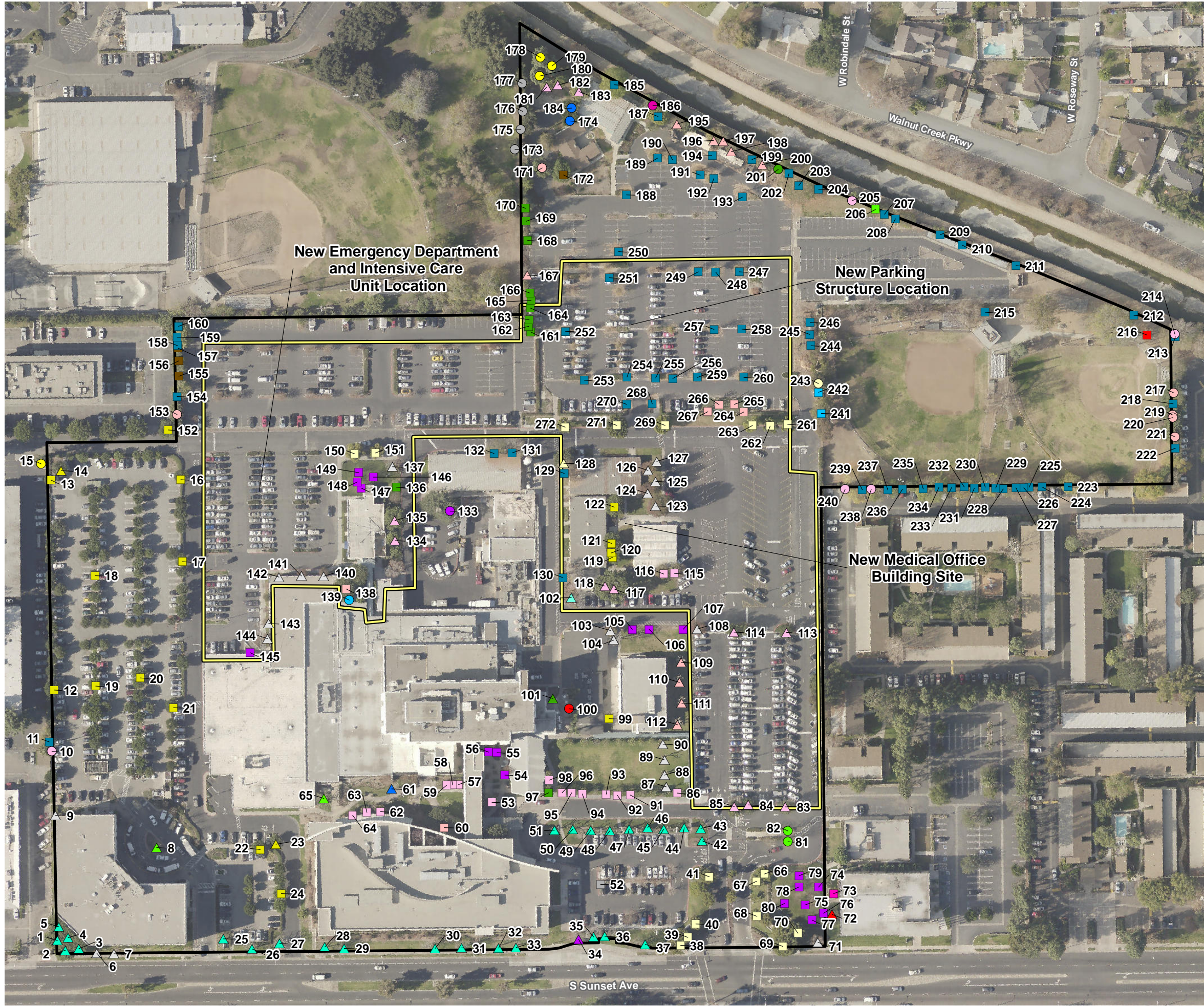
Local Vicinity

Tree Inventory Report for the Queen of the Valley Hospital Medical Office Building and Parking Structure Project

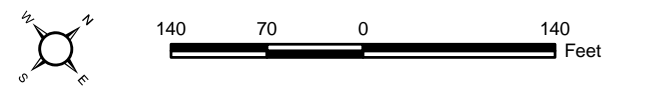
Exhibit 1



D:\Projects\3EMA\010100\WXD\Tree_Report\ex_LV_RL_20200917.mxd



- Property Boundary
- Project Boundary
- Tree Species**
- African fern pine (*Afrocarpus falcatus*)
- Arizona cypress (*Hesperocyparis arizonica*)
- Brazilian peppertree (*Schinus terebinthifolius*)
- California fan palm (*Washingtonia filifera*)
- Canary Island date palm (*Phoenix canariensis*)
- Canary Island pine (*Pinus canariensis*)
- Catalina cherry (*Prunus ilicifolia ssp. Lyonii*)
- Chinese pistache (*Pistacia chinensis*)
- Deodar cedar (*Cedrus deodara*)
- Indian laurel fig (*Ficus microcarpa*)
- Mexican fan palm (*Washingtonia robusta*)
- Nichol's willowleafed peppermint (*Eucalyptus nicholii*)
- Shamel ash (*Fraxinus udeii*)
- South African coral tree (*Erythrina caffra*)
- black locust (*Robinia pseudoacacia*)
- camphor tree (*Cinnamomum camphora*)
- carrotwood (*Cupaniopsis anacardioides*)
- coast redwood (*Sequoia sempervirens*)
- common fig (*Ficus carica*)
- crape myrtle (*Lagerstroemia indica*)
- crimson bottlebrush (*Callistemon citrinus*)
- evergreen pear (*Pyrus kawakamii*)
- glossy privet (*Ligustrum lucidum*)
- goldenrain tree (*Koelreuteria paniculata*)
- holly oak (*Quercus ilex*)
- jacaranda (*Jacaranda mimosifolia*)
- maidenhair tree (*Ginkgo biloba*)
- mulberry (*Morus alba*)
- olive (*Olea europaea*)
- rubber tree (*Ficus elastica*)
- rusty-leaf fig (*Ficus rubiginosa*)
- saucer magnolia (*Magnolia x soulangeana*)
- silk floss tree (*Chorisia speciosa*)
- snag
- southern magnolia (*Magnolia grandiflora*)
- sweetgum (*Liquidambar styraciflua*)
- tulip tree (*Liriodendron tulipifera*)



Aerial Source: LAR-IAC 2014

Tree Locations **Exhibit 2**

Tree Inventory Report for the Queen of the Valley Hospital Medical Office Building and Parking Structure Project

(Rev: 09/25/2020 RMB) R:\Projects\EMA\3\EMA010100\Graphics\Tree_Report\TreeLocations.pdf

D:\Projects\3\EMA\010100\MXD\Tree_Report\Tree_Locations_11x17_20200917.mxd

ATTACHMENT A
TREE DATA SUMMARY

TREE DATA SUMMARY

Tree Tag #	Common Name	Species	# Main Trunks	D.B.H. (in)		Height (ft)	Canopy Diameter (ft)	Health Rating	Aesthetic Rating	Project Component			Notes
				All Trunks	Sum of Largest Two Trunks					MOB	Parking Structure	ED/ICU	
1	jacaranda	<i>Jacaranda mimosifolia</i>	1	16.2	16.2	25	20	4	4				
2	jacaranda	<i>Jacaranda mimosifolia</i>	1	20.4	20.4	25	25	4	4				
3	jacaranda	<i>Jacaranda mimosifolia</i>	1	18.0	18.0	30	20	4	4				
4	jacaranda	<i>Jacaranda mimosifolia</i>	1	14.4	14.4	25	20	4	4				
5	jacaranda	<i>Jacaranda mimosifolia</i>	1	16.8	16.8	25	20	4	4				
6	sweetgum	<i>Liquidambar styraciflua</i>	1	13.0	13.0	20	10	4	4				
7	sweetgum	<i>Liquidambar styraciflua</i>	1	14.4	14.4	20	12	4	4				
8	silk floss tree	<i>Chorisia speciosa</i>	1	17.9	17.9	25	25	4	4				
9	sweetgum	<i>Liquidambar styraciflua</i>	1	12.0	12.0	20	10	4	4				
10	Mexican fan palm	<i>Washingtonia robusta</i>	1	13.0	13.0	35	10	4	3				
11	Shamel ash	<i>Fraxinus uhdei</i>	1	14.4	14.4	25	25	4	4				
12	carrotwood	<i>Cupaniopsis anacardioides</i>	1	17.9	17.9	15	12	4	4				
13	carrotwood	<i>Cupaniopsis anacardioides</i>	1	12.0	12.0	15	12	4	4				
14	rusty-leaf fig	<i>Ficus rubiginosa</i>	1	13.0	13.0	25	25	4	4				
15	Canary Island pine	<i>Pinus canariensis</i>	1	17.2	17.2	40	15	4	4				
16	carrotwood	<i>Cupaniopsis anacardioides</i>	1	14.6	14.6	20	15	4	4				
17	carrotwood	<i>Cupaniopsis anacardioides</i>	1	12.0	12.0	20	15	4	4				
18	carrotwood	<i>Cupaniopsis anacardioides</i>	3	7.4, 4.1, 3.0	11.5	15	12	4	3				
19	carrotwood	<i>Cupaniopsis anacardioides</i>	1	15.0	15.0	20	15	4	4				
20	carrotwood	<i>Cupaniopsis anacardioides</i>	1	13.5	13.5	20	15	4	4				
21	carrotwood	<i>Cupaniopsis anacardioides</i>	1	13.3	13.3	15	15	4	4				
22	carrotwood	<i>Cupaniopsis anacardioides</i>	1	14.5	14.5	15	12	4	4				
23	rusty-leaf fig	<i>Ficus rubiginosa</i>	1	22.5	22.5	20	25	4	4				
24	carrotwood	<i>Cupaniopsis anacardioides</i>	1	12.3	12.3	20	20	4	4				
25	sweetgum	<i>Liquidambar styraciflua</i>	1	18.9	18.9	25	15	4	4				
26	sweetgum	<i>Liquidambar styraciflua</i>	1	20.1	20.1	25	20	4	4				
27	sweetgum	<i>Liquidambar styraciflua</i>	1	16.6	16.6	25	20	4	4				
28	sweetgum	<i>Liquidambar styraciflua</i>	1	16.1	16.1	25	15	2	1				
29	sweetgum	<i>Liquidambar styraciflua</i>	1	12.2	12.2	20	20	3	2				
30	sweetgum	<i>Liquidambar styraciflua</i>	1	14.5	14.5	25	20	4	3				
31	sweetgum	<i>Liquidambar styraciflua</i>	1	16.1	16.1	25	15	4	4				
32	sweetgum	<i>Liquidambar styraciflua</i>	1	14.4	14.4	25	20	3	2				
33	sweetgum	<i>Liquidambar styraciflua</i>	1	14.9	14.9	25	20	4	4				
34	sweetgum	<i>Liquidambar styraciflua</i>	1	9.0	9.0	15	10	1	1				Immediate removal; dead snag with risk to bus stop
35	sweetgum	<i>Liquidambar styraciflua</i>	1	16.3	16.3	30	25	4	3				
36	sweetgum	<i>Liquidambar styraciflua</i>	1	12.6	12.6	20	15	4	3				
37	sweetgum	<i>Liquidambar styraciflua</i>	1	18.6	18.6	30	25	4	3				
38	camphor tree	<i>Cinnamomum camphora</i>	1	13.5	13.5	30	25	4	4				
39	camphor tree	<i>Cinnamomum camphora</i>	1	12.2	12.2	25	20	4	4				
40	camphor tree	<i>Cinnamomum camphora</i>	1	12.8	12.8	25	25	4	4				
41	camphor tree	<i>Cinnamomum camphora</i>	1	14.3	14.3	30	25	4	4				
42	jacaranda	<i>Jacaranda mimosifolia</i>	1	17.2	17.2	25	20	4	4				

TREE DATA SUMMARY

Tree Tag #	Common Name	Species	# Main Trunks	D.B.H. (in)		Height (ft)	Canopy Diameter (ft)	Health Rating	Aesthetic Rating	Project Component			Notes
				All Trunks	Sum of Largest Two Trunks					MOB	Parking Structure	ED/ICU	
43	jacaranda	<i>Jacaranda mimosifolia</i>	1	16.6	16.6	25	20	4	4				
44	jacaranda	<i>Jacaranda mimosifolia</i>	1	19.1	19.1	25	20	4	4				
45	jacaranda	<i>Jacaranda mimosifolia</i>	1	18.9	18.9	25	20	4	4				
46	jacaranda	<i>Jacaranda mimosifolia</i>	1	18.2	18.2	25	20	4	4				
47	jacaranda	<i>Jacaranda mimosifolia</i>	1	17.7	17.7	25	20	4	4				
48	jacaranda	<i>Jacaranda mimosifolia</i>	1	19.6	19.6	25	20	4	4				
49	jacaranda	<i>Jacaranda mimosifolia</i>	1	17.1	17.1	25	25	4	4				
50	jacaranda	<i>Jacaranda mimosifolia</i>	1	15.8	15.8	25	20	4	4				
51	jacaranda	<i>Jacaranda mimosifolia</i>	1	21.6	21.6	30	25	4	4				
52	goldenrain tree	<i>Koelreuteria paniculata</i>	1	12.7	12.7	20	20	4	4				
53	evergreen pear	<i>Pyrus kawakamii</i>	1	17.2	17.2	12	10	4	4				
54	crape myrtle	<i>Lagerstroemia indica</i>	1	12.4	12.4	20	15	4	4				
55	crape myrtle	<i>Lagerstroemia indica</i>	2	10.0, 4.6	14.6	30	25	4	4				
56	crape myrtle	<i>Lagerstroemia indica</i>	2	7.9, 5.3	13.2	30	20	4	4				
57	evergreen pear	<i>Pyrus kawakamii</i>	1	14.2	14.2	12	10	4	4				
58	evergreen pear	<i>Pyrus kawakamii</i>	1	12.2	12.2	12	10	4	4				
59	evergreen pear	<i>Pyrus kawakamii</i>	1	18.1	18.1	12	15	4	4				
60	South African coral tree	<i>Erythrina caffra</i>	1	23.4	23.4	20	20	4	4				
61	maidenhair tree	<i>Ginkgo biloba</i>	2	12.6, 11.1	23.7	30	25	4	4				
62	evergreen pear	<i>Pyrus kawakamii</i>	1	14.7	14.7	12	12	4	4				
63	evergreen pear	<i>Pyrus kawakamii</i>	1	14.5	14.5	15	12	4	4				
64	evergreen pear	<i>Pyrus kawakamii</i>	1	14.3	14.3	12	12	4	4				
65	silk floss tree	<i>Chorisia speciosa</i>	1	27.0	27.0	30	30	4	4				
66	camphor tree	<i>Cinnamomum camphora</i>	1	13.1	13.1	30	25	4	4				
67	camphor tree	<i>Cinnamomum camphora</i>	1	12.6	12.6	30	25	4	4				
68	camphor tree	<i>Cinnamomum camphora</i>	1	15.4	15.4	30	25	4	4				
69	camphor tree	<i>Cinnamomum camphora</i>	1	17.6	17.6	45	40	4	4				
70	camphor tree	<i>Cinnamomum camphora</i>	1	26.5	26.5	35	30	4	4				
71	sweetgum	<i>Liquidambar styraciflua</i>	1	14.6	14.6	30	25	4	3				
72	olive	<i>Olea europaea</i>	3	28.4, 23.6, 9.5	52.0	30	40	4	4				
73	crimson bottlebrush	<i>Callistemon citrinus</i>	5	6.2, 6.2, 5.9, 5.8, 5.8, 5.0	12.4	20	15	4	4				
74	crape myrtle	<i>Lagerstroemia indica</i>	1	12.6	12.6	25	20	4	4				
75	crape myrtle	<i>Lagerstroemia indica</i>	5	7.4, 7.0, 6.5, 5.0, 4.0	14.4	25	15	4	4				
76	crape myrtle	<i>Lagerstroemia indica</i>	3	6.9, 5.5, 4.8	12.4	15	12	4	4				
77	crape myrtle	<i>Lagerstroemia indica</i>	1	12.7	12.7	15	20	4	4				
78	crape myrtle	<i>Lagerstroemia indica</i>	2	9.6, 9.5	19.1	30	25	4	4				
79	crape myrtle	<i>Lagerstroemia indica</i>	3	10.4, 7.6, 7.0	18.0	25	20	4	4				
80	crape myrtle	<i>Lagerstroemia indica</i>	3	5.4, 5.4, 5.0	10.8	15	10	3	3				
81	Chinese pistache	<i>Pistacia chinensis</i>	1	13.9	13.9	20	20	4	3				
82	Chinese pistache	<i>Pistacia chinensis</i>	1	12.1	12.1	20	15	4	4				

TREE DATA SUMMARY

Tree Tag #	Common Name	Species	# Main Trunks	D.B.H. (in)		Height (ft)	Canopy Diameter (ft)	Health Rating	Aesthetic Rating	Project Component			Notes
				All Trunks	Sum of Largest Two Trunks					MOB	Parking Structure	ED/ICU	
83	southern magnolia	<i>Magnolia grandiflora</i>	1	14.1	14.1	20	20	3	3	X			
84	southern magnolia	<i>Magnolia grandiflora</i>	1	15.2	15.2	25	20	4	4	X			
85	southern magnolia	<i>Magnolia grandiflora</i>	1	15.0	15.0	25	20	4	4	X			
86	evergreen pear	<i>Pyrus kawakamii</i>	1	14.5	14.5	15	15	4	4				
87	sweetgum	<i>Liquidambar styraciflua</i>	1	15.6	15.6	25	20	4	4				
88	sweetgum	<i>Liquidambar styraciflua</i>	1	19.7	19.7	25	20	4	4				
89	sweetgum	<i>Liquidambar styraciflua</i>	1	17.1	17.1	25	25	4	4				
90	sweetgum	<i>Liquidambar styraciflua</i>	1	20.2	20.2	25	20	4	4				
91	evergreen pear	<i>Pyrus kawakamii</i>	1	13.5	13.5	15	12	4	4				
92	evergreen pear	<i>Pyrus kawakamii</i>	1	13.1	13.1	15	12	4	4				
93	evergreen pear	<i>Pyrus kawakamii</i>	1	12.6	12.6	15	12	4	4				
94	evergreen pear	<i>Pyrus kawakamii</i>	1	12.1	12.1	15	12	4	4				
95	evergreen pear	<i>Pyrus kawakamii</i>	1	12.5	12.5	15	12	4	4				
96	evergreen pear	<i>Pyrus kawakamii</i>	1	13.6	13.6	15	12	4	4				
97	coast redwood	<i>Sequoia sempervirens</i>	1	12.8	12.8	20	12	4	4				
98	evergreen pear	<i>Pyrus kawakamii</i>	1	15.1	15.1	15	12	4	4				
99	carrotwood	<i>Cupaniopsis anacardioides</i>	1	14.1	14.1	25	20	4	4				
100	California fan palm	<i>Washingtonia filifera</i>	1	14.5	14.5	20	10	4	4				
101	saucer magnolia	<i>Magnolia x soulangeana</i>	1	14.8	14.8	15	15	4	4				
102	tulip tree	<i>Liriodendron tulipifera</i>	1	18.1	18.1	35	25	4	4	X			
103	sweetgum	<i>Liquidambar styraciflua</i>	1	12.6	12.6	30	20	4	4				
104	sweetgum	<i>Liquidambar styraciflua</i>	1	26.3	26.3	40	25	4	4				
105	crape myrtle	<i>Lagerstroemia indica</i>	5	3.5, 3.5, 3.2, 3.0, 3.0	7.0	20	20	4	4				
106	crape myrtle	<i>Lagerstroemia indica</i>	6	4.0, 3.5, 3.5, 3.0, 3.0, 2.5	7.5	20	20	4	4				
107	crape myrtle	<i>Lagerstroemia indica</i>	4	4.5, 4.0, 3.0, 2.5	8.5	15	15	4	4				
108	sweetgum	<i>Liquidambar styraciflua</i>	1	19.3	19.3	45	30	4	4	X			
109	mulberry	<i>Morus alba</i>	1	16.9	16.9	25	20	4	4				
110	mulberry	<i>Morus alba</i>	1	21.0	21.0	30	25	4	4				
111	mulberry	<i>Morus alba</i>	1	17.4	17.4	25	25	4	4				
112	mulberry	<i>Morus alba</i>	1	19.1	19.1	25	25	4	4				
113	southern magnolia	<i>Magnolia grandiflora</i>	1	14.2	14.2	20	20	3	3	X			
114	southern magnolia	<i>Magnolia grandiflora</i>	1	13.0	13.0	20	15	4	3	X			
115	evergreen pear	<i>Pyrus kawakamii</i>	1	26.4	26.4	30	30	4	4	X			
116	evergreen pear	<i>Pyrus kawakamii</i>	1	18.8	18.8	30	30	4	4	X			
117	southern magnolia	<i>Magnolia grandiflora</i>	1	32.1	32.1	40	35	4	4	X			
118	southern magnolia	<i>Magnolia grandiflora</i>	1	16.2	16.2	30	35	4	4	X			
119	carrotwood	<i>Cupaniopsis anacardioides</i>	1	14.3	14.3	25	20	4	4	X			
120	carrotwood	<i>Cupaniopsis anacardioides</i>	1	15.4	15.4	25	20	4	4	X			
121	carrotwood	<i>Cupaniopsis anacardioides</i>	1	13.6	13.6	20	20	4	4	X			
122	carrotwood	<i>Cupaniopsis anacardioides</i>	1	14.2	14.2	25	20	4	4	X			

TREE DATA SUMMARY

Tree Tag #	Common Name	Species	# Main Trunks	D.B.H. (in)		Height (ft)	Canopy Diameter (ft)	Health Rating	Aesthetic Rating	Project Component			Notes
				All Trunks	Sum of Largest Two Trunks					MOB	Parking Structure	ED/ICU	
123	sweetgum	<i>Liquidambar styraciflua</i>	1	31.9	31.9	35	25	4	4	X			
124	sweetgum	<i>Liquidambar styraciflua</i>	1	17.4	17.4	30	20	4	4	X			
125	sweetgum	<i>Liquidambar styraciflua</i>	1	16.2	16.2	30	20	4	4	X			
126	sweetgum	<i>Liquidambar styraciflua</i>	1	19.2	19.2	30	20	4	4	X			
127	sweetgum	<i>Liquidambar styraciflua</i>	1	12.0	12.0	20	20	4	4	X			
128	rubber tree	<i>Ficus elastica</i>	2	20.2, 11.5	31.7	20	15	4	4	X			
129	Shamel ash	<i>Fraxinus uhdei</i>	1	40.4	40.4	40	35	4	4	X			
130	Shamel ash	<i>Fraxinus uhdei</i>	1	29.0	29.0	35	30	4	4	X			
131	Shamel ash	<i>Fraxinus uhdei</i>	1	28.9	28.9	40	35	4	4				
132	Shamel ash	<i>Fraxinus uhdei</i>	1	28.7	28.7	35	35	4	4				
133	Deodar cedar	<i>Cedrus deodara</i>	1	32.9	32.9	35	45	4	4				
134	southern magnolia	<i>Magnolia grandiflora</i>	1	12.0	12.0	30	25	4	4			X	
135	southern magnolia	<i>Magnolia grandiflora</i>	1	15.5	15.5	30	30	4	4			X	
136	coast redwood	<i>Sequoia sempervirens</i>	3	13.6, 13.0, 5.8	26.6	35	25	4	4			X	
137	sweetgum	<i>Liquidambar styraciflua</i>	1	12.5	12.5	20	12	3	3			X	
138	South African coral tree	<i>Erythrina caffra</i>	3	16.1, 15.8, 15.1	31.9	35	35	4	4			X	
139	African fern pine	<i>Afrocarpus falcatus</i>	1	14.3	14.3	30	20	4	4			X	
140	sweetgum	<i>Liquidambar styraciflua</i>	1	18.6	18.6	35	25	4	4			X	
141	sweetgum	<i>Liquidambar styraciflua</i>	1	13.8	13.8	30	20	4	4			X	
142	sweetgum	<i>Liquidambar styraciflua</i>	1	13.7	13.7	30	20	4	4			X	
143	sweetgum	<i>Liquidambar styraciflua</i>	1	12.0	12.0	30	20	4	4			X	
144	sweetgum	<i>Liquidambar styraciflua</i>	1	13.8	13.8	30	25	4	4			X	
145	crape myrtle	<i>Lagerstroemia indica</i>	4	4.5, 4.2, 3.9, 3.5	8.7	20	25	4	4			X	
146	crape myrtle	<i>Lagerstroemia indica</i>	6	5.2, 5.0, 4.5, 4.4, 4.0, 3.0	10.2	25	25	4	4			X	
147	crape myrtle	<i>Lagerstroemia indica</i>	3	7.2, 5.4, 5.0	12.6	25	20	4	4			X	
148	crape myrtle	<i>Lagerstroemia indica</i>	5	6.3, 5.5, 5.0, 4.8, 4.2	11.8	25	20	4	4			X	
149	crape myrtle	<i>Lagerstroemia indica</i>	3	7.0, 4.5, 3.8	11.5	25	25	4	4			X	
150	camphor tree	<i>Cinnamomum camphora</i>	1	19.2	19.2	40	40	4	4			X	
151	camphor tree	<i>Cinnamomum camphora</i>	1	15.5	15.5	25	30	4	4			X	
152	carrotwood	<i>Cupaniopsis anacardioides</i>	1	14.5	14.5	25	25	4	4				
153	Brazilian peppertree	<i>Schinus terebinthifolius</i>	4	13.8, 12.5, 10.8, 9.5	26.3	30	35	4	3				
154	Shamel ash	<i>Fraxinus uhdei</i>	1	19.9	19.9	40	35	4	4				
155	glossy privet	<i>Ligustrum lucidum</i>	6	6.5, 6.0, 4.2, 4.0, 3.5, 3.0	12.5	20	15	4	3				
156	glossy privet	<i>Ligustrum lucidum</i>	2	18.6, 13.5	32.1	25	20	3	3				
157	glossy privet	<i>Ligustrum lucidum</i>	1	19.5	19.5	25	25	4	3				
158	Shamel ash	<i>Fraxinus uhdei</i>	1	31.4	31.4	45	35	4	4				
159	Shamel ash	<i>Fraxinus uhdei</i>	1	27.5	27.5	40	25	4	4				
160	Shamel ash	<i>Fraxinus uhdei</i>	1	13.0	13.0	25	20	4	4				
161	coast redwood	<i>Sequoia sempervirens</i>	1	21.0	21.0	40	25	4	3		X		

TREE DATA SUMMARY

Tree Tag #	Common Name	Species	# Main Trunks	D.B.H. (in)		Height (ft)	Canopy Diameter (ft)	Health Rating	Aesthetic Rating	Project Component			Notes
				All Trunks	Sum of Largest Two Trunks					MOB	Parking Structure	ED/ICU	
162	coast redwood	<i>Sequoia sempervirens</i>	1	15.8	15.8	40	25	4	3		X		
163	coast redwood	<i>Sequoia sempervirens</i>	1	16.3	16.3	40	25	4	3		X		
164	coast redwood	<i>Sequoia sempervirens</i>	1	17.4	17.4	40	20	4	3		X		
165	coast redwood	<i>Sequoia sempervirens</i>	1	16.8	16.8	40	20	4	3				
166	coast redwood	<i>Sequoia sempervirens</i>	1	18.3	18.3	40	20	4	3				
167	mulberry	<i>Morus alba</i>	4	10.6, 10.0, 8.3, 5.0	20.6	25	40	4	4				
168	coast redwood	<i>Sequoia sempervirens</i>	1	18.9	18.9	40	15	3	3				
169	coast redwood	<i>Sequoia sempervirens</i>	1	17.5	17.5	40	20	4	3				
170	coast redwood	<i>Sequoia sempervirens</i>	1	24.1	24.1	40	20	4	3				
171	Brazilian peppertree	<i>Schinus terebinthifolius</i>	1	25.6	25.6	25	25	4	3				
172	glossy privet	<i>Ligustrum lucidum</i>	1	14.4	14.4	30	35	4	3				
173	holly oak	<i>Quercus ilex</i>	1	12.8	12.8	30	12	4	4				
174	Arizona cypress	<i>Hesperocyparis arizonica</i>	1	14.0	14.0	20	25	4	4				
175	holly oak	<i>Quercus ilex</i>	1	13.1	13.1	30	25	4	4				
176	holly oak	<i>Quercus ilex</i>	3	8.7, 8.5, 7.0	17.2	35	25	4	4				
177	holly oak	<i>Quercus ilex</i>	2	9.6, 8.4	18.0	35	25	4	3				
178	Canary Island pine	<i>Pinus canariensis</i>	1	21.7	21.7	60	30	4	4				
179	Canary Island pine	<i>Pinus canariensis</i>	1	24.1	24.1	60	30	4	4				
180	Canary Island pine	<i>Pinus canariensis</i>	1	24.6	24.6	60	30	4	4				
181	southern magnolia	<i>Magnolia grandiflora</i>	1	12.9	12.9	30	25	4	4				
182	southern magnolia	<i>Magnolia grandiflora</i>	1	12.3	12.3	30	25	4	4				
183	southern magnolia	<i>Magnolia grandiflora</i>	1	18.1	18.1	35	30	4	4				
184	Arizona cypress	<i>Hesperocyparis arizonica</i>	2	8.1, 7.5	15.6	20	20	4	4				
185	Shamel ash	<i>Fraxinus uhdei</i>	1	38.5	38.5	45	40	4	4				
186	Indian laurel fig	<i>Ficus microcarpa</i>	5	11.7, 9.8, 8.5, 3.0, 3.0	21.5	30	30	4	3				
187	Shamel ash	<i>Fraxinus uhdei</i>	2	15.7, 13.1	28.8	40	35	4	4				
188	Shamel ash	<i>Fraxinus uhdei</i>	1	13.1	13.1	20	12	4	4				
189	Shamel ash	<i>Fraxinus uhdei</i>	1	14.2	14.2	20	20	4	4				
190	Shamel ash	<i>Fraxinus uhdei</i>	1	16.1	16.1	20	25	4	4				
191	Shamel ash	<i>Fraxinus uhdei</i>	1	14.4	14.4	25	20	4	4				
192	Shamel ash	<i>Fraxinus uhdei</i>	1	13.7	13.7	25	25	4	4				
193	Shamel ash	<i>Fraxinus uhdei</i>	1	14.5	14.5	25	25	4	4				
194	Shamel ash	<i>Fraxinus uhdei</i>	1	14.1	14.1	30	25	4	4				
195	mulberry	<i>Morus alba</i>	1	19.9	19.9	15	15	4	2				
196	mulberry	<i>Morus alba</i>	1	18.7	18.7	25	25	3	3				
197	mulberry	<i>Morus alba</i>	1	16.5	16.5	25	20	4	4				
198	mulberry	<i>Morus alba</i>	2	9.8, 9.0	18.8	25	25	4	4				
199	Shamel ash	<i>Fraxinus uhdei</i>	1	15.1	15.1	40	40	4	4				
200	mulberry	<i>Morus alba</i>	4	9.5, 9.4, 9.0, 7.0	18.9	25	30	3	4				
201	Catalina cherry	<i>Prunus ilicifolia</i> ssp. <i>Lyonii</i>	4	8.3, 5.0, 3.8, 3.6	13.3	30	20	3	2				bacterial canker
202	Shamel ash	<i>Fraxinus uhdei</i>	3	20.0, 14.1, 9.5	34.1	45	30	4	4				

TREE DATA SUMMARY

Tree Tag #	Common Name	Species	# Main Trunks	D.B.H. (in)		Height (ft)	Canopy Diameter (ft)	Health Rating	Aesthetic Rating	Project Component			Notes
				All Trunks	Sum of Largest Two Trunks					MOB	Parking Structure	ED/ICU	
203	Shamel ash	<i>Fraxinus uhdei</i>	1	36.1	36.1	45	50	3	3				
204	Shamel ash	<i>Fraxinus uhdei</i>	1	18.3	18.3	35	25	3	3				
205	Mexican fan palm	<i>Washingtonia robusta</i>	1	14.5	14.5	25	10	2	2				burned
206	common fig	<i>Ficus carica</i>	3	9.1, 8.7, 6.0	17.8	25	20	4	3				
207	Shamel ash	<i>Fraxinus uhdei</i>	2	7.2, 6.2	13.4	30	20	3	3				
208	Shamel ash	<i>Fraxinus uhdei</i>	1	17.3	17.3	25	30	3	3				
209	Shamel ash	<i>Fraxinus uhdei</i>	1	12.4	12.4	25	20	4	3				
210	Shamel ash	<i>Fraxinus uhdei</i>	2	7.1, 6.9	14.0	25	15	4	4				
211	Shamel ash	<i>Fraxinus uhdei</i>	4	7.2, 6.1, 5.2, 4.0	13.3	25	15	4	3				
212	Shamel ash	<i>Fraxinus uhdei</i>	2	7.7, 6.1	13.8	30	20	3	3				
213	Shamel ash	<i>Fraxinus uhdei</i>	1	10.4	10.4	25	25	4	4				
214	Mexican fan palm	<i>Washingtonia robusta</i>	1	10.0	10.0	30	10	4	4				
215	Shamel ash	<i>Fraxinus uhdei</i>	1	29.5	29.5	40	35	4	4				
216	black locust	<i>Robinia pseudoacacia</i>	1	21.9	21.9	30	35	3	2				insulation, bee hive
217	Brazilian peppertree	<i>Schinus terebinthifolius</i>	5	8.8, 8.5, 7.5, 5.0, 3.0	17.3	25	30	4	3				
218	Shamel ash	<i>Fraxinus uhdei</i>	1	12.5	12.5	35	25	4	4				
219	Brazilian peppertree	<i>Schinus terebinthifolius</i>	4	8.0, 6.5, 2.0, 2.0	14.5	25	25	4	3				
220	Brazilian peppertree	<i>Schinus terebinthifolius</i>	10	9.5, 9.0, 6.5, 6.0, 6.0, 5.0, 5.0, 3.0, 3.0, 3.0	18.5	25	35	4	3				
221	Brazilian peppertree	<i>Schinus terebinthifolius</i>	6	10.0, 10.0, 9.5, 9.0, 8.0, 7.0	20.0	30	40	4	3				
222	Shamel ash	<i>Fraxinus uhdei</i>	1	14.4	14.4	40	25	4	3				
223	Shamel ash	<i>Fraxinus uhdei</i>	2	18.2, 9.2	27.4	45	35	4	4				
224	Shamel ash	<i>Fraxinus uhdei</i>	8	6.6, 5.0, 4.5, 3.5, 3.0, 3.0, 2.8, 2.8	11.6	30	25	3	3				
225	Shamel ash	<i>Fraxinus uhdei</i>	1	15.7	15.7	45	35	4	4				
226	Shamel ash	<i>Fraxinus uhdei</i>	1	15.5	15.5	45	35	4	4				
227	Shamel ash	<i>Fraxinus uhdei</i>	5	13.1, 13.0, 10.9, 10.0, 9.0	26.1	45	40	4	3				
228	Shamel ash	<i>Fraxinus uhdei</i>	1	13.0	13.0	40	25	4	4				
229	Shamel ash	<i>Fraxinus uhdei</i>	1	12.0	12.0	40	20	3	3				
230	Shamel ash	<i>Fraxinus uhdei</i>	1	15.9	15.9	45	35	3	3				
231	Shamel ash	<i>Fraxinus uhdei</i>	1	19.5	19.5	40	30	3	3				
232	Shamel ash	<i>Fraxinus uhdei</i>	1	15.5	15.5	45	30	3	2				
233	Shamel ash	<i>Fraxinus uhdei</i>	3	9.0, 9.0, 5.0	18.0	40	30	3	3				
234	Shamel ash	<i>Fraxinus uhdei</i>	5	13.5, 13.0, 9.5, 6.0, 6.0	26.5	50	45	4	4				
235	Shamel ash	<i>Fraxinus uhdei</i>	5	5.0, 4.0, 4.0, 4.0, 3.0	9.0	25	20	3	3				
236	Shamel ash	<i>Fraxinus uhdei</i>	5	7.0, 6.5, 6.0, 6.0, 4.0	13.5	30	25	3	3				

TREE DATA SUMMARY

Tree Tag #	Common Name	Species	# Main Trunks	D.B.H. (in)		Height (ft)	Canopy Diameter (ft)	Health Rating	Aesthetic Rating	Project Component			Notes
				All Trunks	Sum of Largest Two Trunks					MOB	Parking Structure	ED/ICU	
237	Shamel ash	<i>Fraxinus uhdei</i>	1	20.6	20.6	45	35	4	4				
238	Mexican fan palm	<i>Washingtonia robusta</i>	1	12.0	12.0	25	5	4	3				
239	Shamel ash	<i>Fraxinus uhdei</i>	1	32.5	32.5	45	50	4	4				
240	Mexican fan palm	<i>Washingtonia robusta</i>	1	14.1	14.1	45	10	4	3				
241	Nichol's willowleafed peppermint	<i>Eucalyptus nicholii</i>	1	24.6	24.6	40	35	4	3				
242	Nichol's willowleafed peppermint	<i>Eucalyptus nicholii</i>	1	22.3	22.3	40	30	3	3				
243	Canary Island date palm	<i>Phoenix canariensis</i>	2	30.0, 17.0	47.0	30	25	4	4				
244	Shamel ash	<i>Fraxinus uhdei</i>	1	25.1	25.1	30	25	4	3				
245	Shamel ash	<i>Fraxinus uhdei</i>	1	26.5	26.5	25	20	3	2				
246	Shamel ash	<i>Fraxinus uhdei</i>	1	25.8	25.8	30	30	4	3				
247	Shamel ash	<i>Fraxinus uhdei</i>	1	14.1	14.1	30	25	4	4		X		
248	Shamel ash	<i>Fraxinus uhdei</i>	1	13.4	13.4	25	20	4	4		X		
249	Shamel ash	<i>Fraxinus uhdei</i>	1	12.5	12.5	25	20	4	4		X		
250	Shamel ash	<i>Fraxinus uhdei</i>	1	12.5	12.5	25	20	4	4				
251	Shamel ash	<i>Fraxinus uhdei</i>	1	12.1	12.1	25	20	4	4		X		
252	Shamel ash	<i>Fraxinus uhdei</i>	1	19.5	19.5	30	25	4	4		X		
253	Shamel ash	<i>Fraxinus uhdei</i>	1	14.0	14.0	25	20	4	4		X		
254	Shamel ash	<i>Fraxinus uhdei</i>	1	12.1	12.1	25	20	4	4		X		
255	Shamel ash	<i>Fraxinus uhdei</i>	1	13.8	13.8	25	25	4	4		X		
256	Shamel ash	<i>Fraxinus uhdei</i>	1	13.4	13.4	25	20	4	4		X		
257	Shamel ash	<i>Fraxinus uhdei</i>	1	15.2	15.2	30	25	4	4		X		
258	Shamel ash	<i>Fraxinus uhdei</i>	1	13.0	13.0	25	20	4	4		X		
259	Shamel ash	<i>Fraxinus uhdei</i>	1	13.4	13.4	25	25	4	4		X		
260	Shamel ash	<i>Fraxinus uhdei</i>	1	12.1	12.1	25	20	4	4		X		
261	camphor tree	<i>Cinnamomum camphora</i>	1	14.4	14.4	30	25	4	4		X		
262	camphor tree	<i>Cinnamomum camphora</i>	1	14.1	14.1	30	25	4	4		X		
263	camphor tree	<i>Cinnamomum camphora</i>	1	12.5	12.5	30	25	4	4		X		
264	South African coral tree	<i>Erythrina caffra</i>	7	17.0, 15.0, 14.5, 14.0, 13.0, 11.0, 11.0	32.0	30	25	4	4		X		
265	South African coral tree	<i>Erythrina caffra</i>	6	15.8, 14.5, 13.0, 11.5, 11.5, 11.0	30.3	30	30	4	4		X		
266	South African coral tree	<i>Erythrina caffra</i>	3	20.7, 14.4, 13.7	35.1	30	30	4	4		X		
267	South African coral tree	<i>Erythrina caffra</i>	3	21.0, 20.4, 10.6	41.4	30	30	4	4		X		
268	Shamel ash	<i>Fraxinus uhdei</i>	1	13.6	13.6	25	20	4	4		X		
269	camphor tree	<i>Cinnamomum camphora</i>	1	14.9	14.9	30	35	4	4		X		
270	Shamel ash	<i>Fraxinus uhdei</i>	1	13.8	13.8	30	25	4	4		X		
271	camphor tree	<i>Cinnamomum camphora</i>	1	21.2	21.2	30	35	4	4		X		
272	camphor tree	<i>Cinnamomum camphora</i>	1	13.8	13.8	25	25	4	4		X		